



Foxe Basin Kivalliq North Sapujiyiit/ Guardians of the Sea Society

Hudson Bay Summit
November 30, 2022



About us

- Collaboration between Chesterfield Inlet, Coral Harbour, and Naujaat
- Originally formed in response to the proposed Marine Protected Area



History of concerns

- 2007: Final hearing for Meadowbank Mine
 - Elders predicted the shipping would scare away marine mammals
- In 2015 these impacts were being seen and community members in Chesterfield Inlet again raised these concerns
 - Article in Nunatsiaq News “Solutions exist for Chesterfield Inlet’s marine life concerns”
 - GENICE research collaboration with the University of Manitoba
 - Collaborate with Sarah Newell on doctoral thesis

Why now?



Community members in the region have been fighting for a Marine Protected Area (MPA) since seeing the shipping impacts on their marine mammals



The Department of Fisheries and Oceans proposed an MPA which community members felt did not adequately include their concerns, so they rejected it as proposed



We hope to create a pilot Guardians program which will inform the MPA and MPA negotiation process



Mandate and vision

- *The Sapujiyit Society's mandate is to monitor and protect the waters, mammals, and Inuit who live in the Foxe Basin Kivalliq North area.*
- We will accomplish this through:
 - Providing sustainable incomes and training for local harvesters and youth
 - Developing a research project that responds to local concerns
 - Improving the quality of work being done in the region by researchers, government organizations and private companies



Our Team

Paul Angutetuar – Naujaat Director

Noah Kadlak – Coral Harbour Director

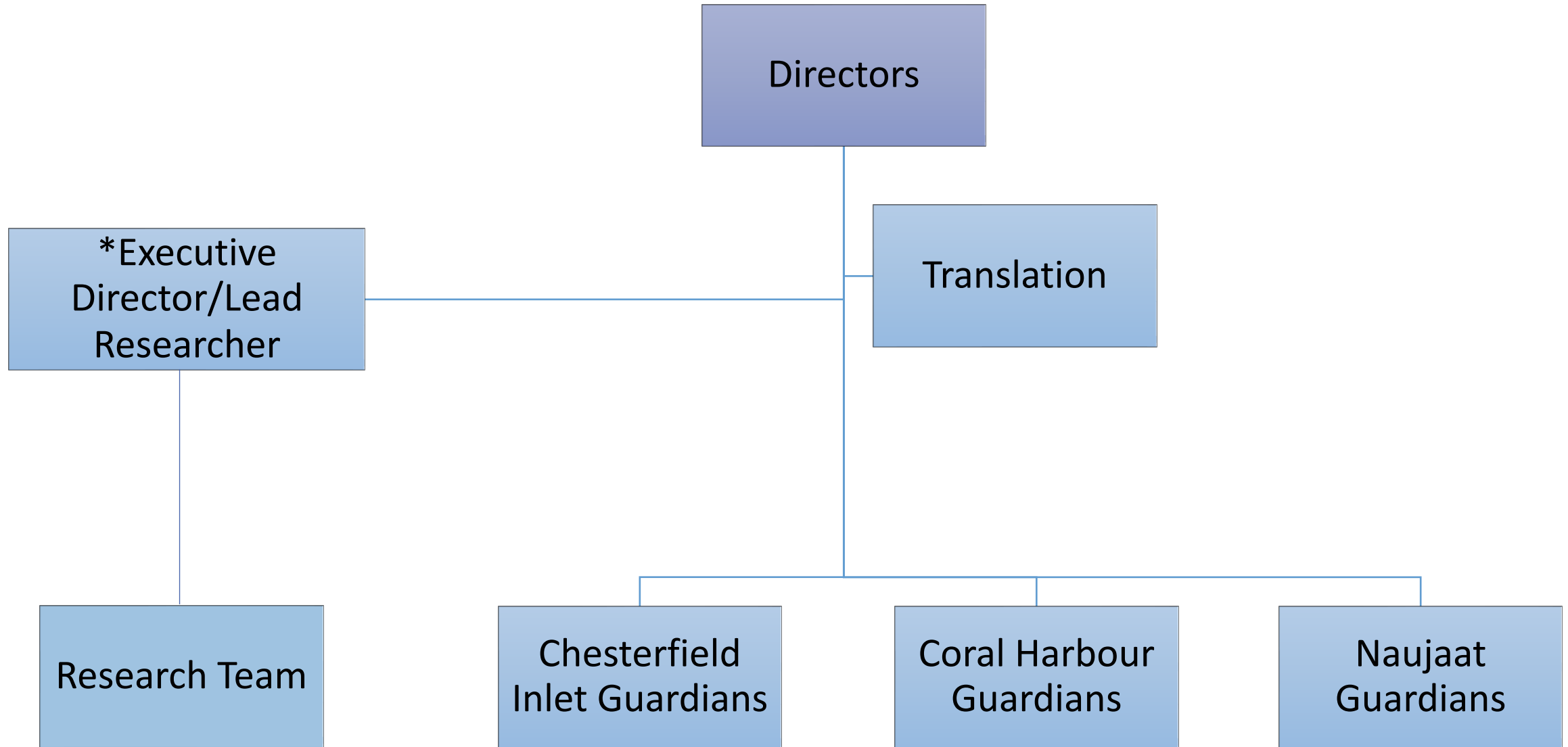
Chelsi McNeill-Jewer – Natural Sciences
Researcher

Sarah Newell – Executive Director and
Lead Researcher

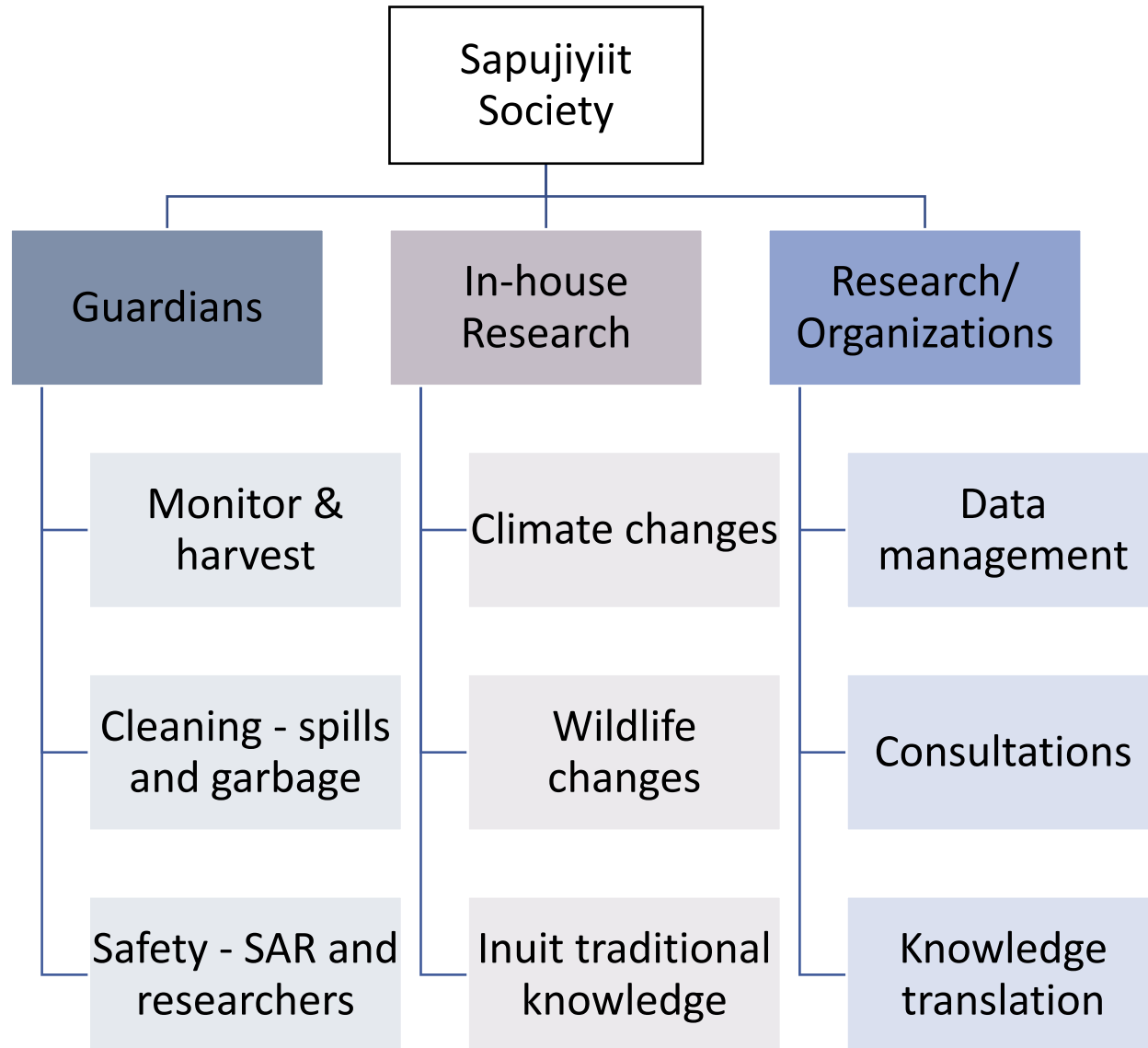
Barnie Aggark – Senior Executive
Director and Chesterfield Inlet Director

Kelly Kadjuk – Translator

Organizational Structure



3 Key Focus Areas



Research topics

Regional:

- Climate change
- Shipping impacts

Community specific:

- Chesterfield Inlet – shipping impacts on seals and belugas
- Coral Harbour – shipping route impacts on walrus and belugas and a detour
- Naujaat – changes in narwhal migration, belugas, and increasing garbage

Partners and collaborators

Already supported

- Aiviit HTO
- Aqigiq HTO
- Arviq HTO
- World Wildlife Fund
- MakeWay
- University of Manitoba CEOS
- KIA

Requested support letters

- Agnico Eagle Mines
- NTI Department of Wildlife and Environment
- KWB
- Ukkusiksalik National Park Committee
- NWMB
- Oceans North



Thank you!
Questions?