



**TASIUJAQIUQMIUT
SHEEWETAGANAPOI
CONSORTIUM**

2025 Roundtable

Thank you to our partners and sponsors!



AIR CANADA

ᐃᐅᐃᐅᐅ
Air Inuit



Crown-Indigenous Relations
and Northern Affairs Canada
Relations Couronne-Autochtones
et Affaires du Nord Canada



Fisheries and Oceans
Canada
Pêches et Océans
Canada





**TASIUJAJUAQMIUT
SHEEWETAGANAPOI
CONSORTIUM**

Welcoming Remarks

8:45 am – 9:00 am



Agenda: Day 2

8:45 – 9:00: Opening Remarks

9:00 – 10:15: Regional Updates (continued)

10:15 – 10:45: Coffee Break

10:45 – 12:00: Community Roundtable (continued)

12:00 – 1:00: Lunch Break

1:00 – 3:00: Self-Determination, Data Sovereignty and Interoperability

3:00 – 3:00: Coffee Break

3:30 – 4:45: Collaborative Co-Development Approaches

4:45 – 5:00: Wrap-up



Roundtable Objectives

Discussion topics on our agenda include:

- Updates from Community Delegates and Regional Organizations
- Self-Determination, Data Sovereignty and Interoperability
- Collaborative Co-Development Approaches
- Community Fisheries
- Demonstrating the Impact of Projects
- Opportunities for Partnerships and Support
- Planning Next Steps for the Consortium



COMMUNITY-DRIVEN RESEARCH AND MONITORING



KEYNOTE ADDRESS



AN INTERCONNECTED ECOSYSTEM



WE MUST TAKE A LEADING ROLE

RECLAIMING AUTHORITY

TRADITIONAL KNOWLEDGE IS ESSENTIAL TO CONDUCT RESEARCH AND TO WESTERN SCIENCE

STRENGTHENING OUR CONNECTION TO THE LAND

→ CREE NATION RESEARCH INSTITUTE

WE ARE PART OF THE LAND & WATER

OPENING REMARKS

RYAN BARRY
LUCASIE AARAGUTAINAQ



ONE OF THE MOST COMPLEX MARINE JURISDICTION IN CANADA

OUR HUNTING GROUND

DIVISIONS BETWEEN REGIONS

→ WORK TOGETHER

WE ARE USING THE SAME WATER

1990-1997 → TRADITIONAL KNOWLEDGE OF INUIT AND CREE

STEWARDSHIP EFFORTS IN HUDSON BAY



HONORING THE FLORA FAUNA AND PEOPLE OF THE REGION

2000 HUDSON BAY OCEANS WORKING GROUP

2004 NUNAVUT HB INTERAGENCY WORKING GROUP

2010 HB INLAND SEA INITIATIVE

2012 HB REGIONAL ROUNDTABLE

TASIUJAGUAMIUT SHEEWETAGANAPOI CONSORTIUM

THOSE LIVING IN THE BIG BAY

SECRETARIAT AND WORKING GROUP UPDATES



SOCIAL MEDIA



FUNDRAISING

NEW WORKING GROUP ENVIRONMENTAL EMERGENCY RESPONSE

WG: COMMUNITY-DRIVEN RESEARCH



WG: INDIGENOUS STEWARDSHIP AND PROTECTED AREAS
COLLEEN PARKER

WG: COMMUNICATIONS

- NEW LOGO
- KAITLIN BRETON-HONEYMAN
- POLYNA CONSULTING
- LANGUAGE POLICIES



COMMUNITY-DRIVEN APPROACH
DEVELOP TOOLS TO COORDINATE AND FACILITATE KNOWLEDGE-SHARING

TANGIBLE ACTIONS
COLLABORATION KNOWLEDGE STEWARDSHIP



2025 ROUNDTABLE
RESEARCH MONITORING
ISSUES & INITIATIVES

- PRIORITIES
- EXPERIENCES
- METHODS TOOLS STRATEGIES



MONTREAL ROUNDTABLE FEB 25-27, 2025

DAY 1

Yukon Graphic Recording
ILLUSTRATION BY: ESTHER B. 2025

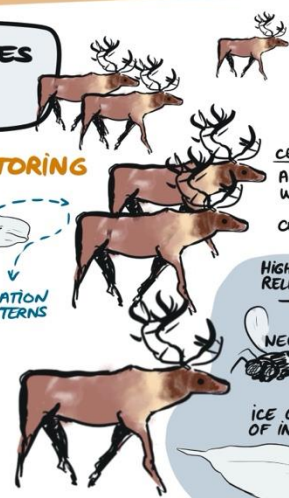
COMMUNITY-DRIVEN RESEARCH AND MONITORING



COMMUNITY UPDATES & PRIORITIES

RESEARCH & MONITORING

- REGIONAL BIODIVERSITY**
- Foreign Species
- CLIMATE**
 - EFFECT ON TRADITIONAL LIFESTYLE
 - CHANGING LANDSCAPES
 - THINNING ICE THAWING PERMAFROST
 - HABITAT LOSS INFRASTRUCTURE DAMAGE
- INDIGENOUS GOVERNANCE**
- MARINE STEWARDSHIP
- ENVIRONMENTAL HEALTH**
- ACCESS TO TRAD. FOODS



BAKER LAKE

- MINE
- MARINE TRAFFIC
- SEALS AFFECTED BY MARINE TRAFFIC
- ANCHORED UNTIL ICE FORMS

CENTRAL MUNAVUT

- ANIMAL HEALTH WATER MONITORING
- CARIBOU MEAT → PARASITES?

HIGH TRAFFIC OF SHIPS RELATED TO GOLD PUNES → IMPACT ON MARINE MAMMALS + CARIBOU

NEW SPECIES

ICE CROSSING OF INLET → MUCH LATER

CHESTERFIELD INLET

WE'VE CHANGED OUR MIGRATION ROUTE DUE TO WARMER WATERS

WE MIGRATE LATER TOO (END SEPT.)

FOOD WATER SECURITY

LACK OF INVESTMENT IN COMMUNITY

TREATY SUPPOSED TO BE PROTECTED. LACK OF LEGISLATION LACK OF TRUST

PORT NELSON

- KEEYASK HYDRO DAM
- LAND GUARDIAN PROGRAM
- SICKNESS IN ANIMALS

CHURCHILL

- IMPACT OF RESIDENTIAL SCHOOLS
- CHURCHILL MARINE OBSERVATORY



NAUJAAT

UNHEALTHY CARIBOU, FISH, MARINE ANIMALS (WALRUS)

BASELINE DATA COLLECTION + SHARING AGREEMENT

SAR OPERATIONS



RISK OF OIL SPILLS

FORT SEVERN DATA COLLECTION ORAL HISTORY BIODIVERSITY

PAST ARCHIVES ABOUT ANIMALS, CLIMATE, RIVER HEALTH

WESTERN SCIENCE

DATA MANAGEMENT PLANS

- Ownership
- LAND USE PLAN

LAND GUARDIAN PROGRAM

EYES OF THE NATION

HARVESTER PROGRAM (TRAPPING)

LONG TERM MONITORING

INFLUX OF PEOPLE DEVELOPMENT ALONG RIVERS

DATA AGRICULTURE



CONSERVATION PLAN



MIGRATION ROUTES HAVE CHANGED FOR ALL ANIMALS

SMART ICE

TRAINING

PUVIRATUQ

UMIUTAQ

BEAVER POP TROVING N → KEEP STREAMS CLEAR FROM DAMS

PANGANARLUK

ZIYANILUP

NARSANGA

IRQAQARVUK

KUJSTURAPAK

EASTMAIN

Eeyou Marine

WASKAGANISH

ON RESEARCH + DATA COLLECTION

ISOSTATIC REBOUND STORY

RUPERT RIVER JUNCTION

WASKAGANISH

COASTAL PLACE NAMES

WILDLIFE SURVEYS

LAND-BASED PROGRAM



INDUSTRIAL ACTIVITIES



POLICIES



MONTREAL ROUNDTABLE FEB 25-27, 2025

DAY 1

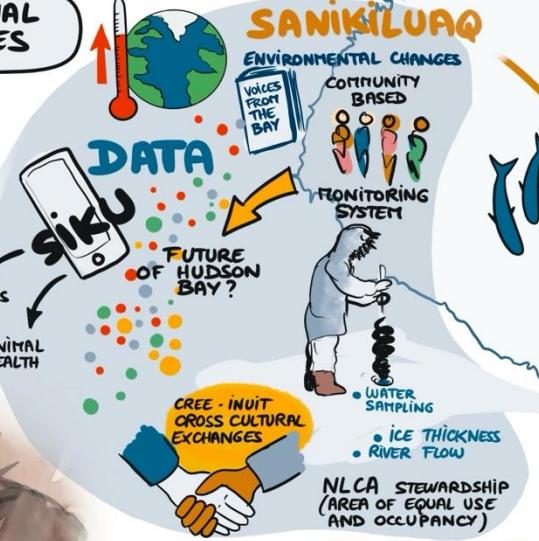
Yukon Graphic Recording

ILLUSTRATION BY: ESTHER B. 2025

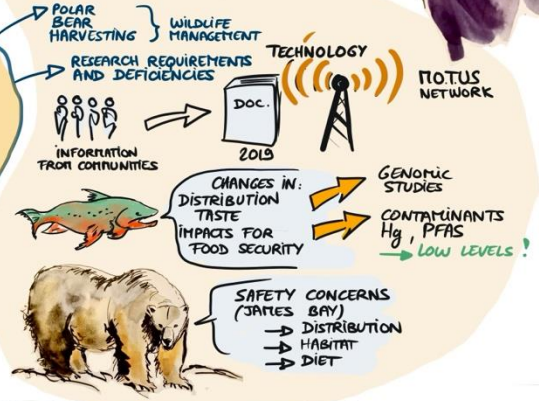
COMMUNITY-DRIVEN RESEARCH AND MONITORING



REGIONAL UPDATES



EYOU MARINE REGION



MUSHKEGOWUK CONSERVATION AREA



Roundtable Objectives

As we work through the agenda, some questions to consider:

- What are the shared challenges and priorities of communities?
- What approaches have been working well?
- What support is needed by communities?
- What resources are available to support this work?
- What areas would benefit from working together?
- What is the best strategy for moving from priorities to action?
- What are the next steps required?





**TASIUJAQIUQMIUT
SHEEWETAGANAPOI**
CONSORTIUM



Regional Updates

9:00 am – 10:15 pm

Regional Updates

- 1. Marine Planning in Nunavik**
 - Janelle Kennedy, Nunavik Marine Region Planning Commission
- 2. Regional Outcomes and New Features for Community-Led Climate Research on SIKU**
 - Joel Heath, Arctic Eider Society
- 3. Anguvigaq Monitoring Project Update**
 - Alec Niviaxie, Anguvigaq





**TASIUJAQIUQMIUT
SHEEWETAGANAPOI
CONSORTIUM**



Coffee Break

Please return for 10:45 am



**TASIUJAQIUARMIUT
SHEEWETAGANAPOI
CONSORTIUM**

Community Updates & Priorities

(Continued)

10:45 pm – 12:00 pm



Please share your Community Updates & Priorities

This is your platform to share:

- Research and monitoring priorities that matter most to your community.
- Updates on community research or monitoring initiatives
- Issues you'd like to see addressed
- Feedback on the Consortium's Project Map

Your voices will guide our future direction
— let's hear your perspectives!





**TASIUJAQIUQMIUT
SHEEWETAGANAPOI**
CONSORTIUM



Lunch Break

Please return for 1:00 pm



**TASIUJAQIUARMIUT
SHEEWETAGANAPOI
CONSORTIUM**

Self-Determination, Data Sovereignty and Interoperability

1:00 pm – 3:00 pm

Self-Determination, Data Sovereignty & Interoperability

Indigenous organizations around the Bays are working to uphold Indigenous self-determination, rights, and sovereignty through innovative research and monitoring initiatives, ensuring outcomes benefit communities and data generated is used for approved purposes only.

This session will explore how to balance the standardization of data collection methods and interjurisdictional data-sovereignty - crucial for transparency, collaboration, and interoperability across the Bays - while integrating Indigenous knowledge systems, traditions, and local priorities.

Through open dialogue, participants will identify practical ways to respect data sovereignty while enabling interoperability to further stewardship across the regions, foster trust, enhance collaboration, and ensure efforts respect and reflect the unique needs and capacities of communities.



Self-Determination, Data Sovereignty & Interoperability

*Moderated by Maude Durand,
Community-Driven Research and Monitoring Working Group Leader*

Panelists:

- Lucassie Arragutainaq, Sanikiluaq HTA/Arctic Eider Society
- Barb Duffin, Mushkegowuk Council GIS Hub
- Peter Pulsifer, Carleton University
- Joel Heath, Arctic Eider Society





**TASIUJAQIUQMIUT
SHEEWETAGANAPOI
CONSORTIUM**



Coffee Break

Please return for 3:30 pm



**TASIUJAQIUARMIUT
SHEEWETAGANAPOI
CONSORTIUM**

Collaborative Co-Development Approaches

3:30 pm – 4:45 pm



Collaborative Co-Development Approaches

Empowering communities and youth to become more actively engaged in research and monitoring, moving from participants to partners to leading research. This session will showcase positive examples from around the regions, including university/community partnerships.



Collaborative Co-Development Approaches

*Moderated by Maude Durand,
Community-Driven Research and Monitoring Working Group Leader*

- 1. Eeyou Coastal Habitat Comprehensive Research Project**
 - Melanie LeBlanc & Ernie Rabbitskin, Niskamoon Corporation
- 2. Nunavik Polar Bear Research**
 - Alexandra Langweider,
- 3. Omushkego and Eeyou Istchee Polar Bear Research Collaboration**
 - Vicki Sahanatien, Mushkegowuk Council
- 4. ArcticSat and ACCESS**
 - Philip Ferguson





**TASIUJAQIUARMIUT
SHEEWETAGANAPOI
CONSORTIUM**

Wrap Up: Day 2

4:45 pm





**TASIUJAQIUQMIUT
SHEEWETAGANAPOI
CONSORTIUM**

2025 Roundtable

Breakfast starts at 7:00 am

Welcoming Remarks start 8:45 am